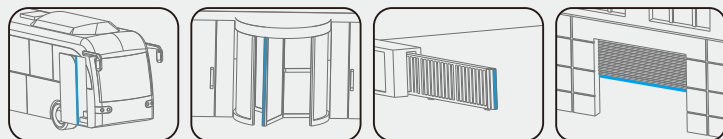
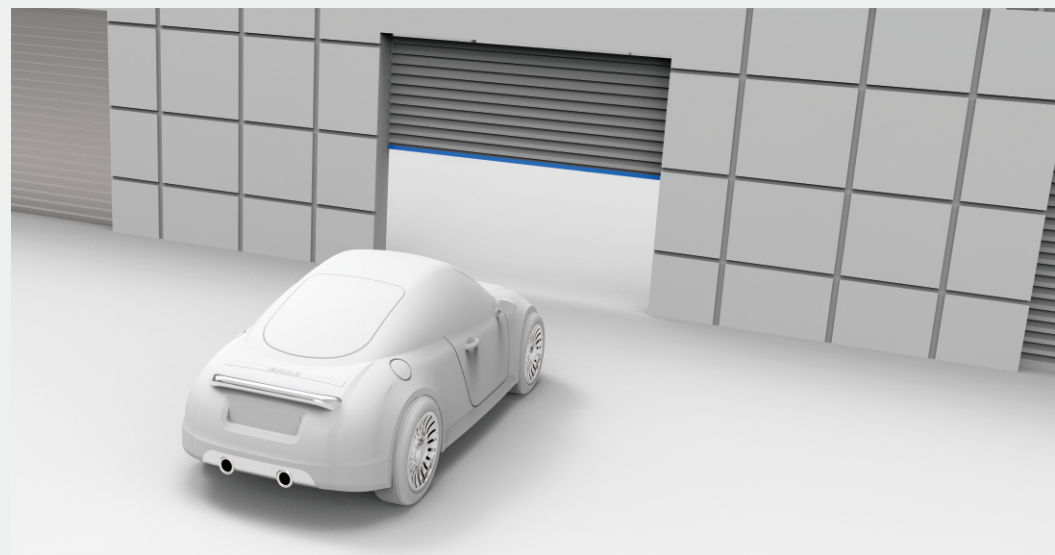
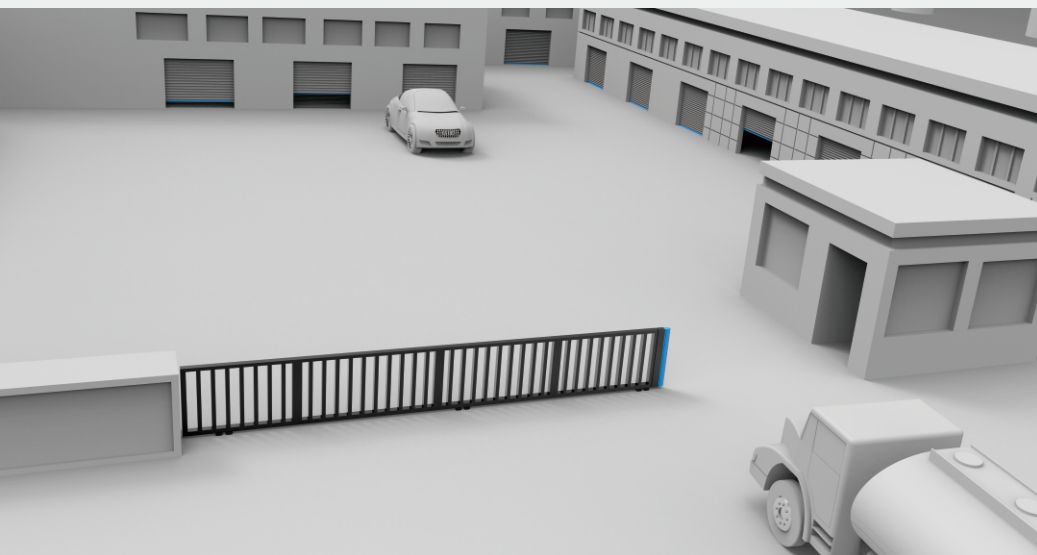


Secure your automation



Professional manufacturer of safety edge



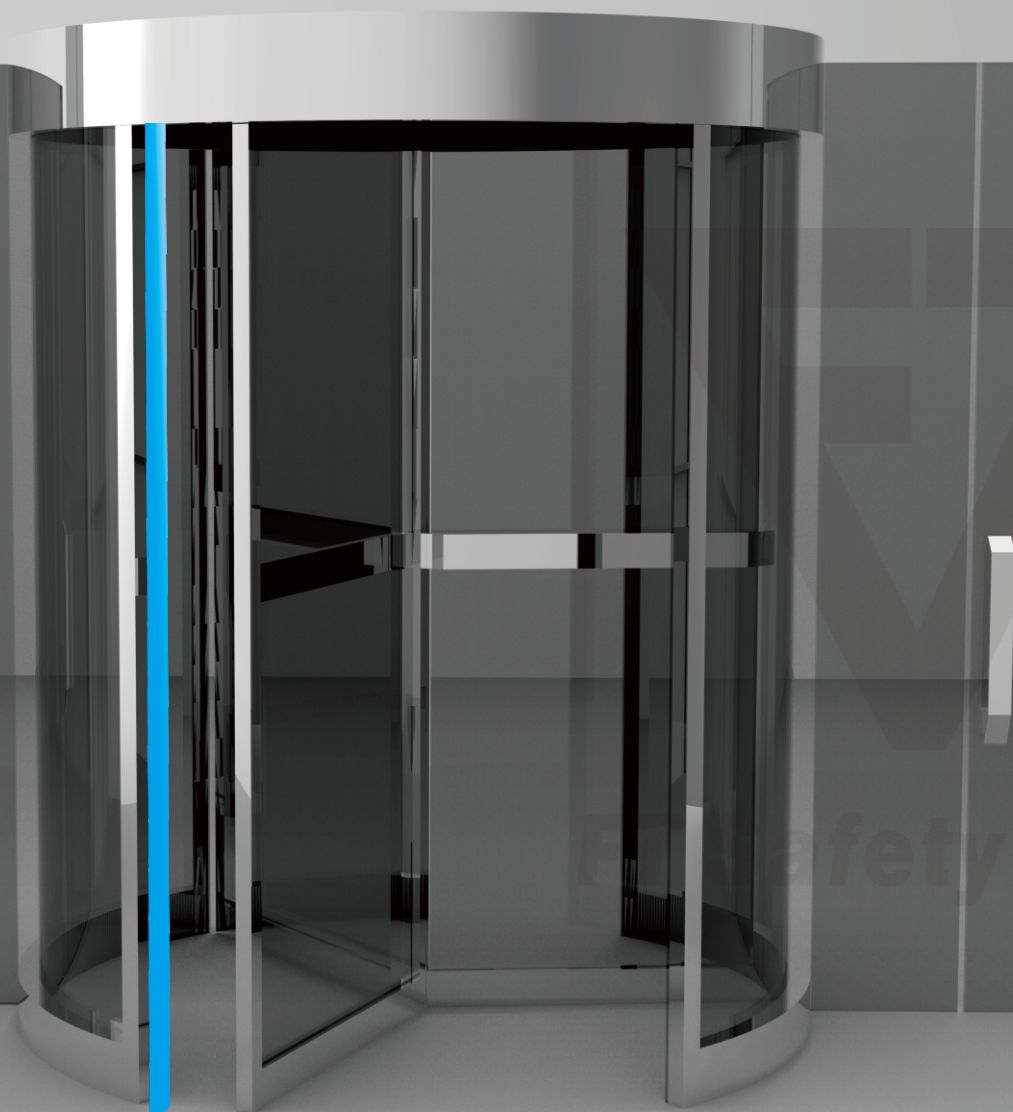
FUTAI INDUSTRIAL CO.,LTD.

Add: No. 199 Changxing Road,
Hongtang Jiangbei Ningbo, China
postcode: 315033

tel: +86 574 89063860
e-mail: info@futaimotor.com
www.futaimotor.com



FUTAI INDUSTRIAL CO.,LTD.



Professional manufacturer of safety edge

C O N T E N T S

About us	01/02
Certificates & Patents.....	03
Combination of General View.....	04

Safety edge

Sensor Tape	05/06
Integrated safety edges.....	07/08
EPDM Rubber Profile	09/10
Aluminum tracks and end piece.....	11/12
Plugs and end pieces.....	13/14

Applications & Installations	15/16
Package and order list.....	17/18



About FT

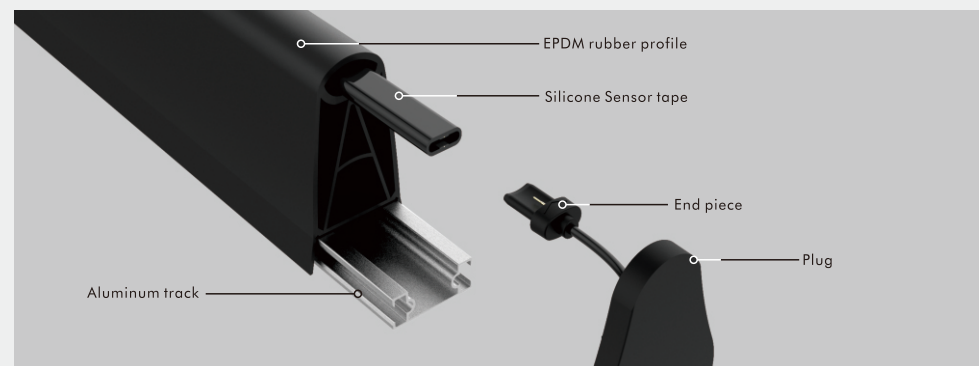
Futai Industrial Co., Ltd is located in Ningbo China, set up in 2010, specialized in design, manufacturing, sales and service of high-end motors and security units for doors and gates. Products including tubular motors, rubber safety edges, related electronic controllers and accessories etc. (Here in this catalogue only show rubber safety edges, other products please contact us at info@futaimotor.com).

Futai persists "quality first, clients first" as company spirit. Keeping innovation and committed to becoming outstanding and influential company in automation area. The products are of CE, RoHS approved, SAEJ1455 tested for transportation field. Mainly export to Europe, USA, Middle East, South America, Australia Asia etc. Welcome to visit us and negotiate cooperation.

CE RoHS

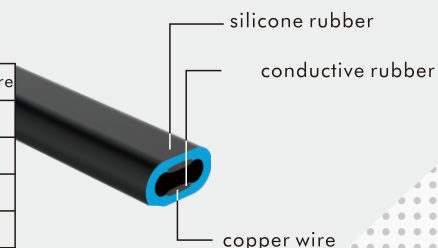


Micro sensor tape series working principle:
Miniature sensor tape is composed of two conductive adhesive composite copper wire that can be divided upper and lower two parts, by a specific distance, sensing end of tape according to its different usage to connecting different plug_in units. Then insert it into rubber coating and connected to the switch, all components will form a completes system

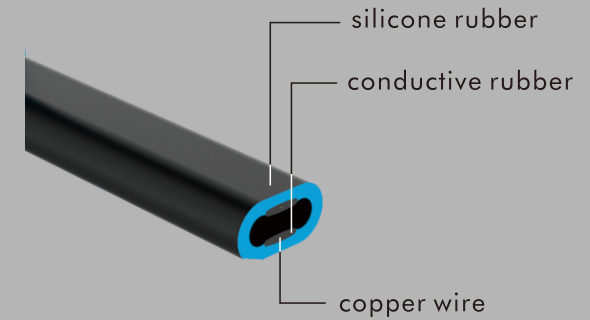
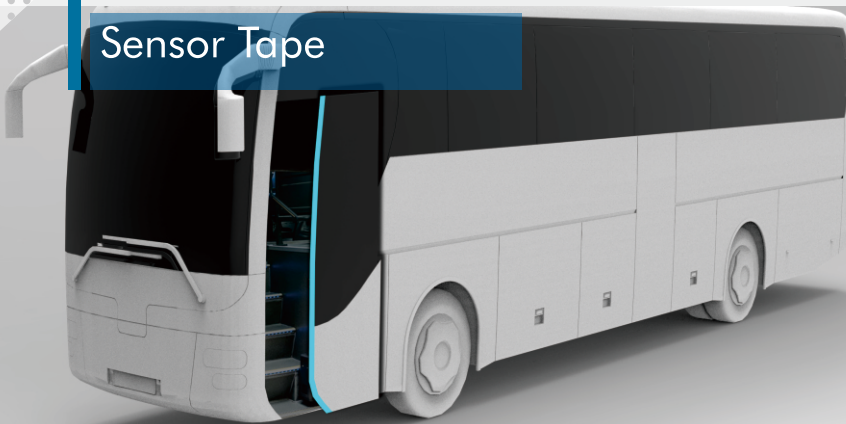


Specifications:

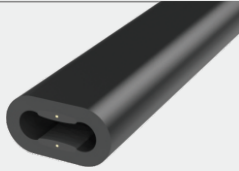
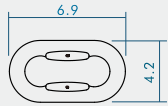
Material	silicone composite copper wire
Application temperature range	-40°C ~ 80°C
Alternate capacity	0.2A/42V AC/DC
Resistance	less than 0.150 Kohm
Launch distance	1.5mm or more
Connecting cable Insulated wire	2x0.34mm ²
Bending angle maximum	15 degree when diameter 1m



Sensor Tape

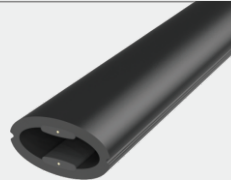
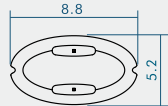


FS-1N



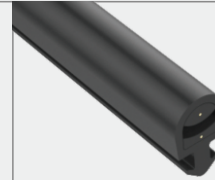
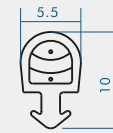
C10

FS-2



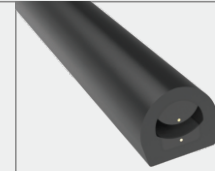
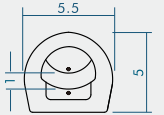
C04

FS-5K



C15

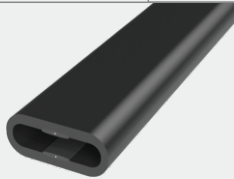
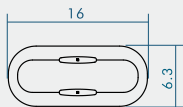
FS-5



C15

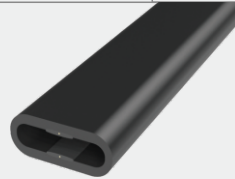
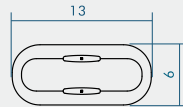
3M adhesive tape optional

FS-3



C05

FS-4

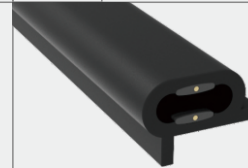
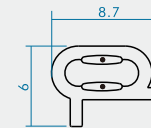


C10



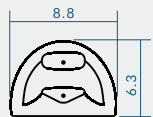
T111

FS-6



C10

FS-11



C04

3M adhesive tape optional

Safety, flexible and reliable
20 years service life or 100,000 times using.

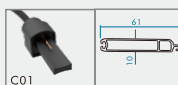
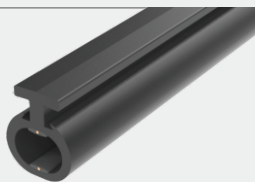
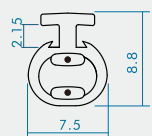
Safety Edge is mainly used for protecting crushing and shearing points on electric shutters, sliding gates, industrial doors, automatic production lines, buses, road barriers, AGV, security and public transportations etc. According to the construction, it is divided into two types, integrated type and separated type.

1. Separated type composed by: sensitive tape, rubber profile, end piece, side plug and aluminum track ;
2. Integrated type composed by: integrated sensitive edge, end piece, side plug and aluminum track.

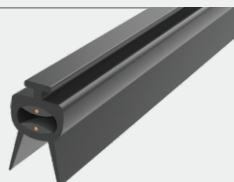
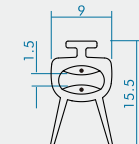
Integrated safety edges



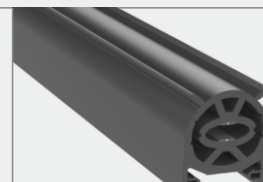
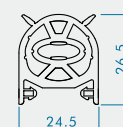
FS-37



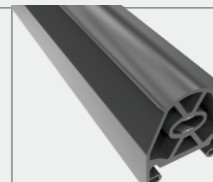
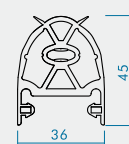
FS-38



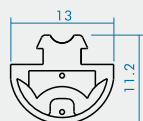
FS-104



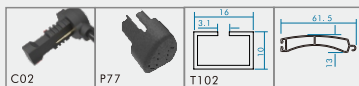
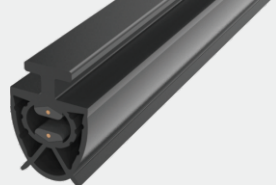
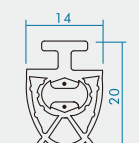
FS-105



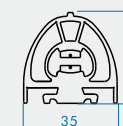
FS-39



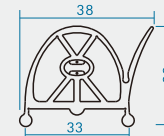
FS-55N



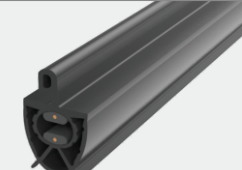
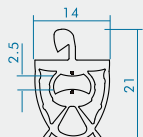
FS-108



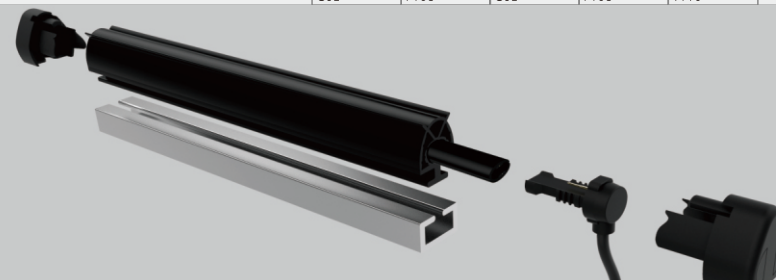
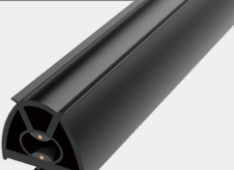
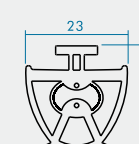
FS-108N



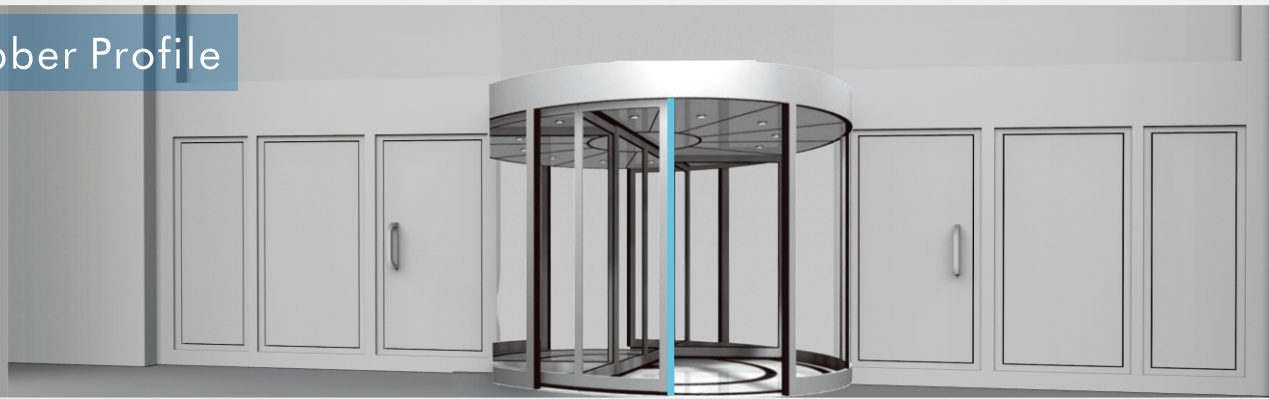
FS-55V



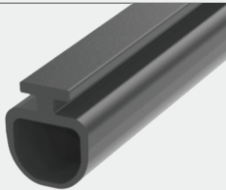
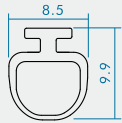
FS-95



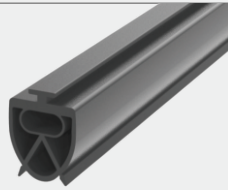
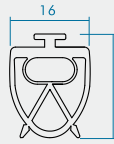
EPDM Rubber Profile



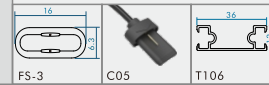
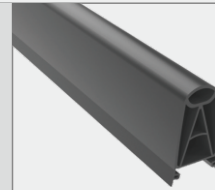
R101



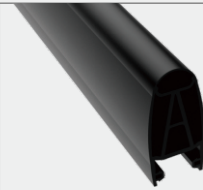
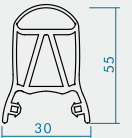
R102



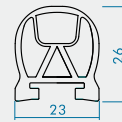
R218



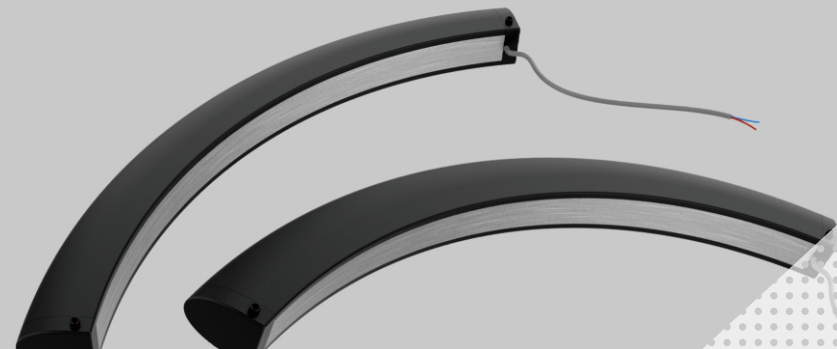
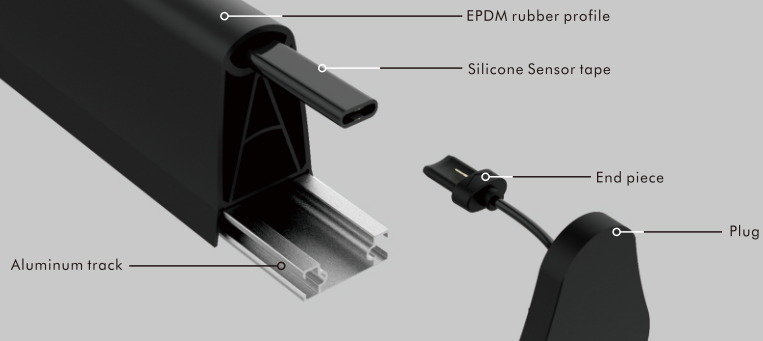
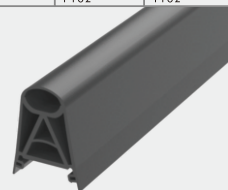
R219



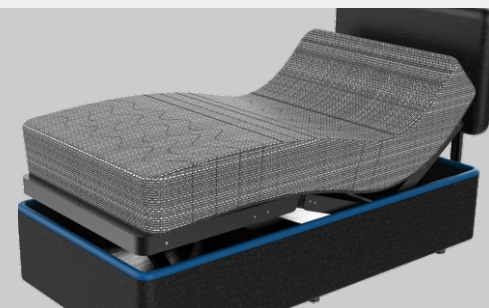
R201



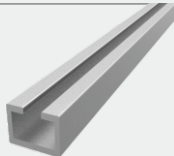
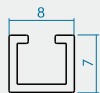
R206



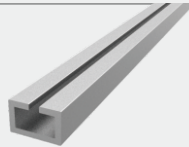
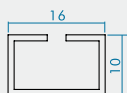
Aluminum tracks and end piece Plugs and end pieces



T101



T102



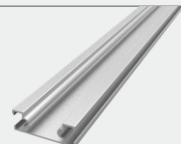
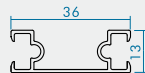
Match with 77N and R102

T104



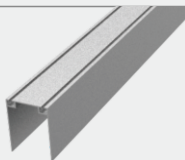
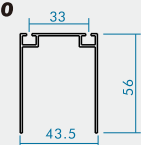
Match with FS-104 and R104

T106

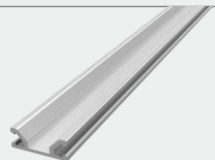
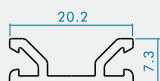


Match with FS-106, R106 and R107

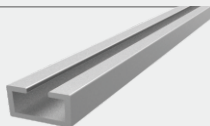
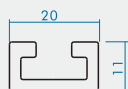
T110



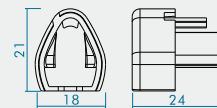
T109



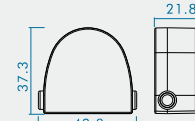
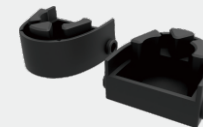
T103



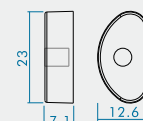
P77



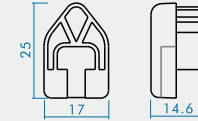
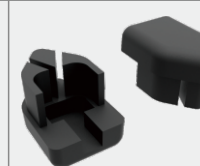
P95



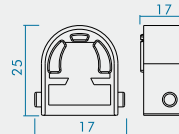
P99



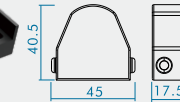
P-102



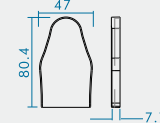
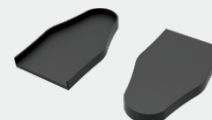
P104



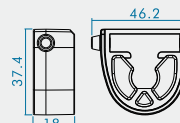
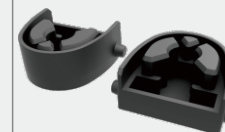
P105



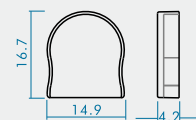
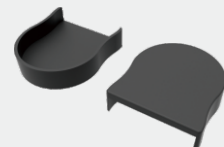
P-107a



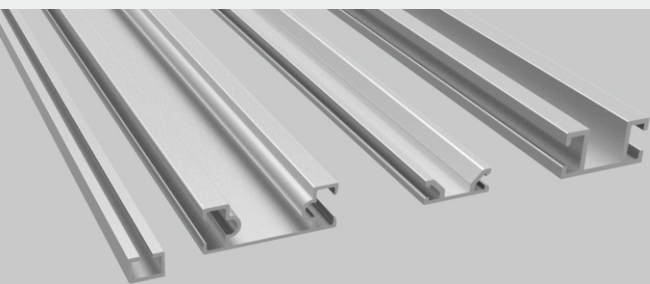
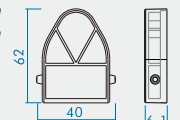
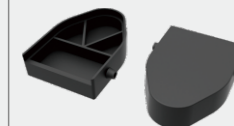
P108



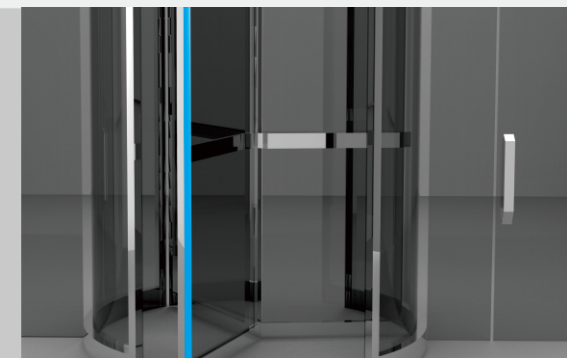
P-201



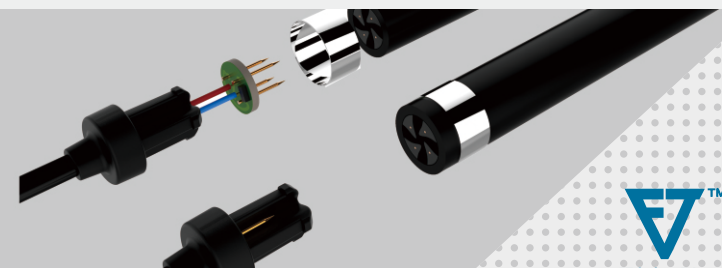
P-206

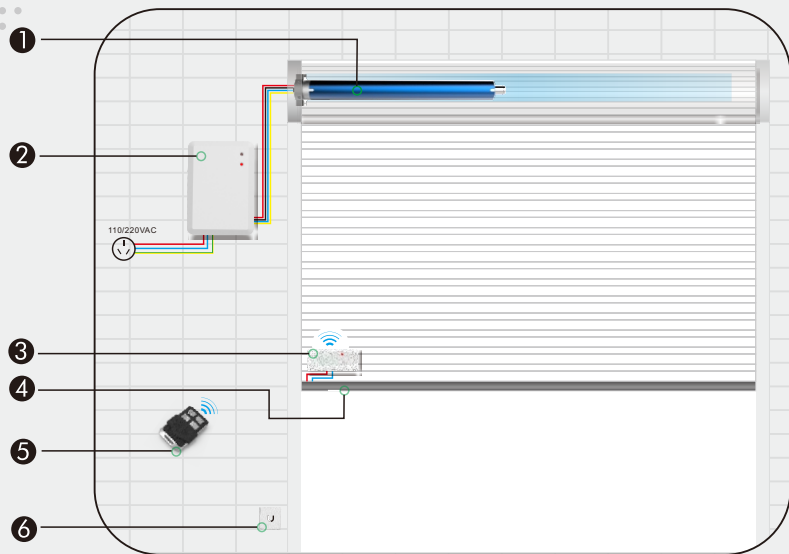


Aluminum tracks and end piece Plugs and end pieces

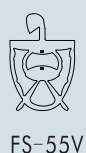


C01 	C02 	C15 	C15A 
C04 	C05 	C15C 	C39 
C08 	C07A (Two Wires) 		
C07B (Four Wires) 	C10 		





- 1 Tubular motor
- 2 Receiver-----FC70
- 3 Wireless Sensor processor ----FC60
- 4 Safety edge-----
- 5 Transmitter-----FC105
- 6 Magnet



FS-55V



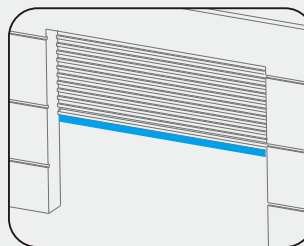
FS-55N

Working theory:

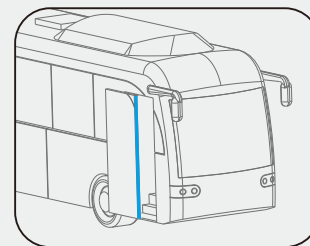
Safety edge is made of conductive compound copper wires of upper and lower two parts. They separate at a certain distance when not squeezed. The two parts connect with end pieces and sensor processor in a series, when the safety edge be squeezed, the two parts of upper and lower contact, which lead a circuit cycle, the resistance and current change, the sensor processor received this detect this change and pass signal to the controllers, The controllers will achieve the settled functions such as:

- 1) door or windows stop immediately
- 2) run back till upper limit
- 3) run back for settled seconds before stop.

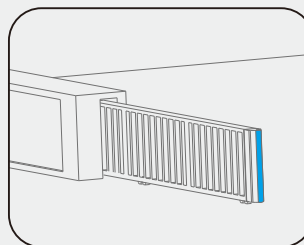
Installation on



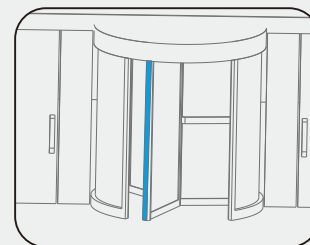
roller shutter and doors



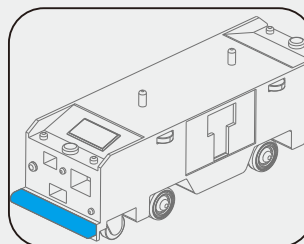
bus, coach and car



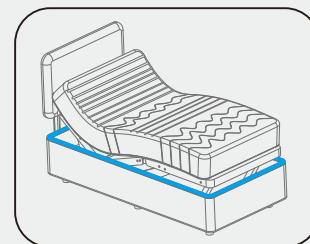
sliding gate



revolving door



AGV, automated guided vehicle



Automatic adjustable bed

Installation on auto production equipments, subway auto door, adjustable bed, Automatic weeding machine, Automatic lifting platform, Robot arm.....

Package and order list

If you need a bulk purchase, please inform us the product model and quantity.

Futai Safety	Futai model	quantity	unit	end piece (W/O Resistor)	plug	Track	Remark
SENSOR TAPE	FS-1N	100 m	roll	C04R, C04N	/	/	/
	FS-1	100 m	roll	C04R, C04N	/	/	/
	FS-2	100 m	roll	C09R, C09N	/	/	/
	FS-3	50 m	roll	C05R, C05N	/	/	/
Integrated safety edge	FS-37	50 m	roll	C01R, C01N	/	/	/
	FS-55N	30 m	roll	C02R, C02N	P77	T102	/
	FS-55V	30 m	roll	C02R, C02N	P77	T102	/
	FS-77N	30 m	roll	C02R, C02N	P77	T102	/
	FS-77V	30 m	roll	C02R, C02N	P77	T102	/
	FS-95	30 m	roll	C02R, C02N	P95	T103	/
RUBBER PROFILE	R101	30m	roll	/	P101	/	/
	R102	30m	roll	/	P102	T102	/
	R103	30m	roll	/	P103	T103	/
	R106	10m	roll	/	P106	T105 or T106	/
	R107	10m	roll	/	P107	T105 or T106	/
	R205	10m	roll	/	P107	T105 or T106	/
END PIECE	C01R	50 kits	bag	/	/	/	with 8.2kohm
	C01N	50 kits	bag	/	/	/	without resistor
	C02R	50 kits	bag	/	/	/	with 8.2kohm
	C02N	50 kits	bag	/	/	/	without resistor
	C04R	50 kits	bag	/	/	/	with 8.2kohm
	C04N	50 kits	bag	/	/	/	without resistor
	C05R	50 kits	bag	/	/	/	with 8.2kohm
	C05N	50 kits	bag	/	/	/	without resistor
	C09R	50 kits	bag	/	/	/	with 8.2kohm
	C09N	50 kits	bag	/	/	/	without resistor
PLUG	P77	100pairs	bag	/	/	/	/
	P95	100pairs	bag	/	/	/	/
	P101	100pairs	bag	/	/	/	/
	P102	100pairs	bag	/	/	/	/
	P103	100pairs	bag	/	/	/	/
	P106	100pairs	bag	/	/	/	/
	P107	100pairs	bag	/	/	/	/
TRACK	T102	3m	piece	/	/	/	/
	T103	3m	piece	/	/	/	/
	T105	3m	piece	/	/	/	/
	T106	3m	piece	/	/	/	/

If you need finished product, please write orders as below, or contact us.

FS55N 170 R 1 002

Futai safety model No. length with resistor one end piece cable length

Futai Safety	code	safety edge length	w/o Resistor	single or double cable	end piece cable length (cm)
FS	37	50	R*	1	025
FS	38	100	N*	2	200
FS	55N	150	100
FS	55V	170	/	/	...
FS	77N	...	/	/	/
FS	77V	/	/	/	/
FS	95	/	/	/	/
FS	101	/	/	/	/
FS	102	/	/	/	/
FS	103	/	/	/	/
FS	104	/	/	/	/
FS	105	/	/	/	/
FS	108	/	/	/	/
FS	205	/	/	/	/
...	...	/	/	/	/

*R: with resistor 8.2kohm

*N: without any resistors

